



Whilst every effort is made to give a fair description, the accuracy of these particulars is not guaranteed, neither do they constitute an offer or contract.

MATHESONS ESTATE AGENTS have not tested any apparatus, equipment, fitting or services and so cannot verify that they are in working order. The buyer is advised to obtain verification from their solicitor or surveyor. Measurements are correct to within +/-6 A sonic tape is used. None of the statements contained in these particulars or any of our properties are to be relied upon as a representation of fact.

166 Manor Park Road
Harlesden
London
NW10 4JT
T: 020 8965 2250
E: sales@mathesonsestates.com
www.mathesonsestates.com



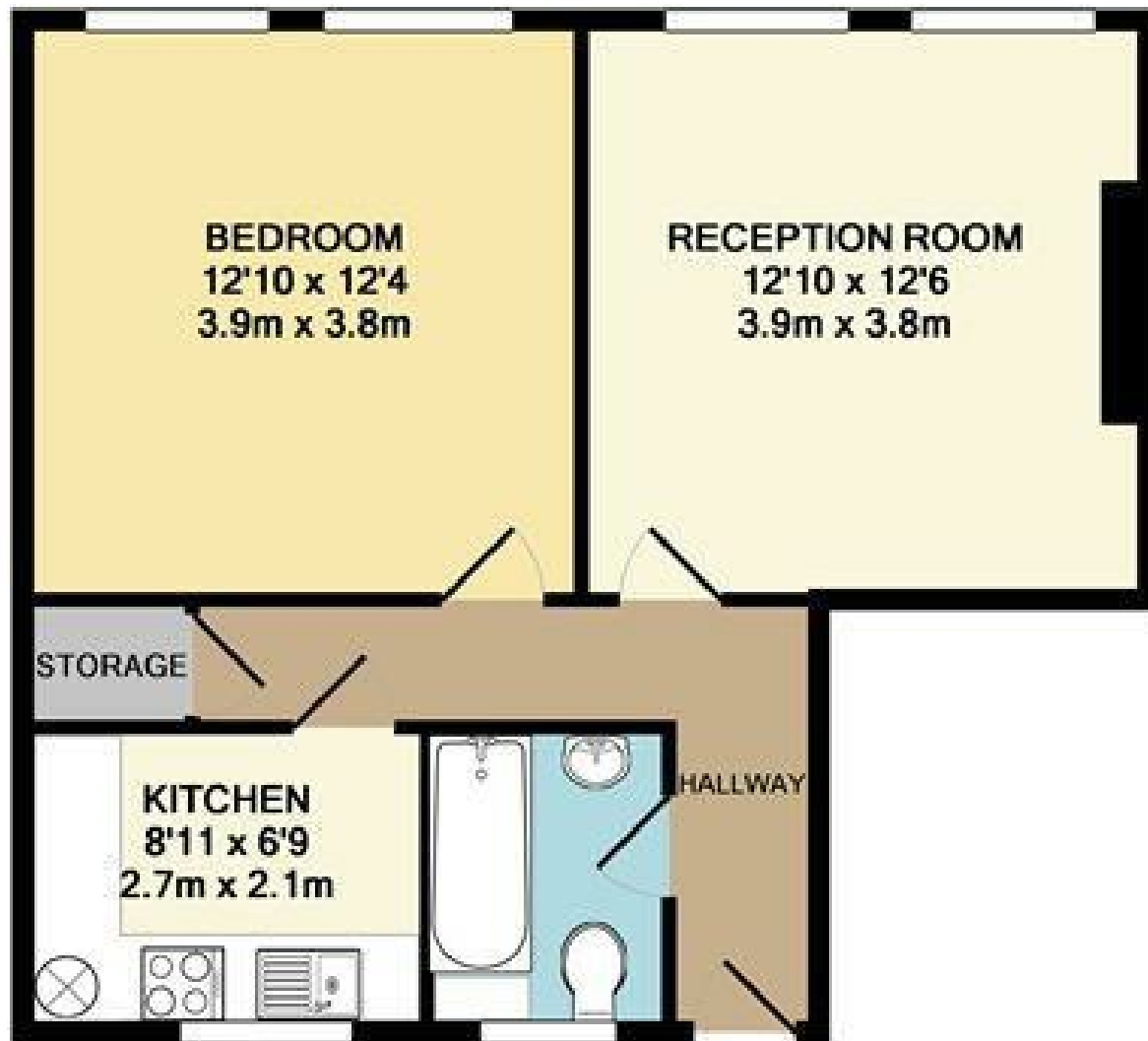
Gibraltar House, Harlesden, London NW10 9AH £269,950 Leasehold



KEY FEATURES:

- SPACIOUS 1 DOUBLE BEDROOM FLAT
- Bright separate reception room
- Kitchen
- Part tiled bathroom
- Parquet flooring
- Storage cupboard
- Communal gardens
- LEASEHOLD

Spacious one bedroom flat located on the 2nd Floor of this private purpose built block. Benefits include a bright separate reception room, double bedroom, kitchen, part tiled bathroom, parquet flooring, storage cupboard mature communal gardens. The property is located on a residential tree lined road, within close proximity to schools, shopping amenities, bus routes on the Acton Lane and within easy reach of Willesden Junction (Bakerloo Line Zone 2, London Overground). Ideally suited for a first time buyer or buy to let investment.



TOTAL APPROX. FLOOR AREA 480 SQ. FT. (44.6 SQ. M.)

Whilst every attempt has been made to ensure the accuracy of the floor plan contained here, measurements of doors, windows, rooms and any other items are approximate and no responsibility is taken for any error, omission, or mis-statement. This plan is for illustrative purposes only and should be used as such by any prospective purchaser. The services, systems and appliances shown have not been tested and no guarantee as to their operability or efficiency can be given
Made with Metropix ©2014